

Ref: 908_120635

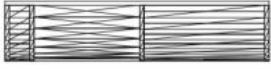
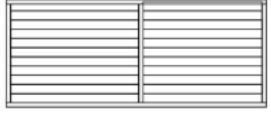
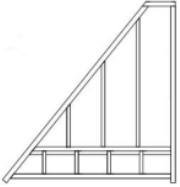
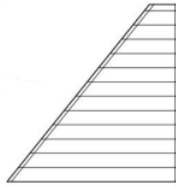









Bali



**h&j Habitat
et Jardin**

2021-2022

908_120635

1#	Corner plate (A/B/C/D)		4pcs	1/1
2#	Seal plate		4pcs	1/1
3#	Top frame		8pcs	1/1
4#	Tile		8pcs	1/1
5#	Arch		2pcs	1/1
6#	Beam		4pcs	1/1
7#	Tile ridge		8pcs	1/1
8#	Tripod		4pcs	1/1
9#	Pavilion roof		1pcs	1/1
10#	Bar surface		1pcs	1/1
11#	Bar feet		2pcs	1/1
12#	Bar chair		4pcs	1/1
13#	Step		1pcs	1/1

14#	Screw : M8*78mm		1batch	1/1
15#	Screw : M8*73mm		1batch	1/1
16#	Screw : M8*68mm		1batch	1/1
17#	Screw : M8*40mm		1batch	1/1
18#	Screw : M4*90mm		1batch	1/1
19#	Screw : M4*60mm		1batch	1/1
20#	Screw : M4*30mm		1batch	1/1
21#	Allen key: 5mm		2pcs	1/1
22#	rubber plug of Screw hole : 14mm		1batch	1/1

FR : SAV/INFORMATION /VIDEO/CONTACT

EN: AFTER-SALES SERVICE/INFORMATION/VIDEO/CONTACT

DE : REPARATUR-SERVICE UND ERSATZTEILE /INFORMATIONEN /VIDEO/KONTAKT

ES: SERVICIO POST-VENTA/INFORMACIÓN/VIDEO/CONTACTO

IT: SERVIZIO ASSISTENZA/INFORMAZIONI/VIDEO/CONTATTO

PT: SERVIÇO PÓS-VENDA/INFORMAÇÕES/VIDEO/CONTATO

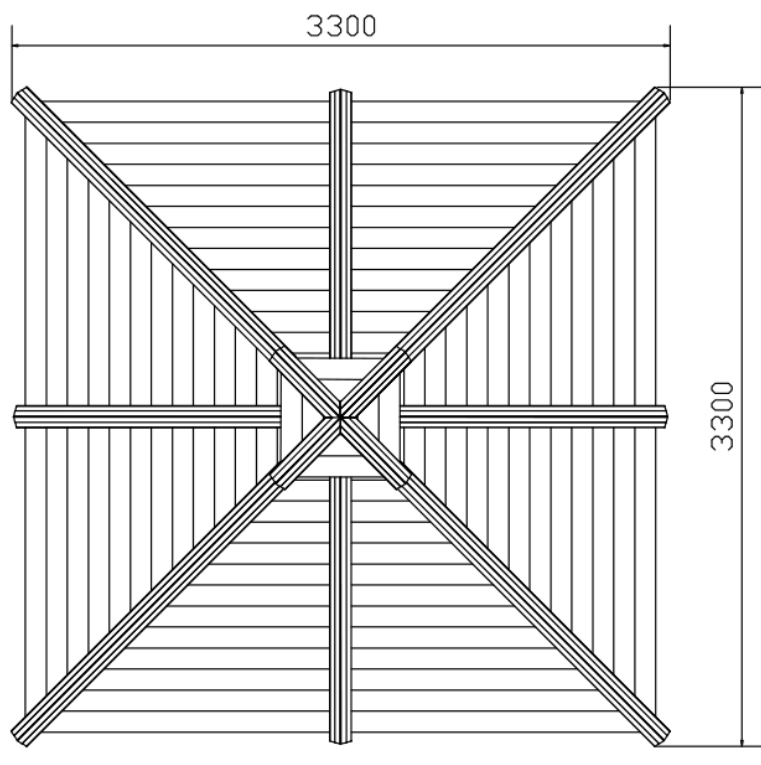
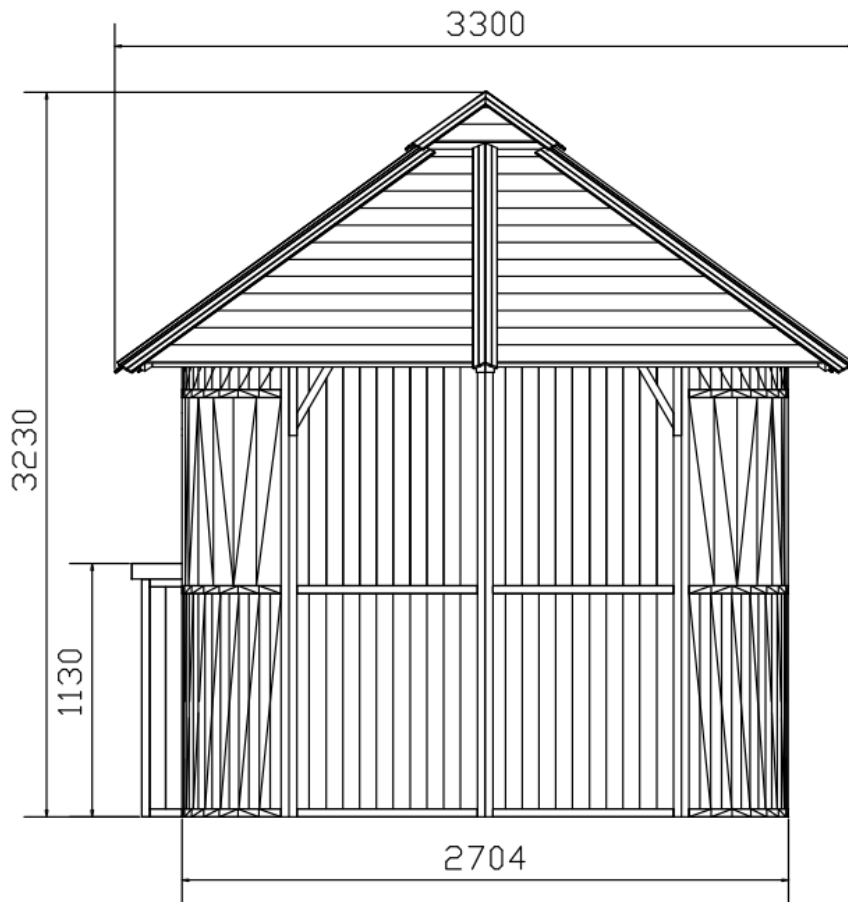
PL: SERWIS TECHNICZNY/INFORMACJE/WIDEO/KONTAKT

NE: AFTER SALES SERVICE/INFORMATIE/VIDEO/CONTACT

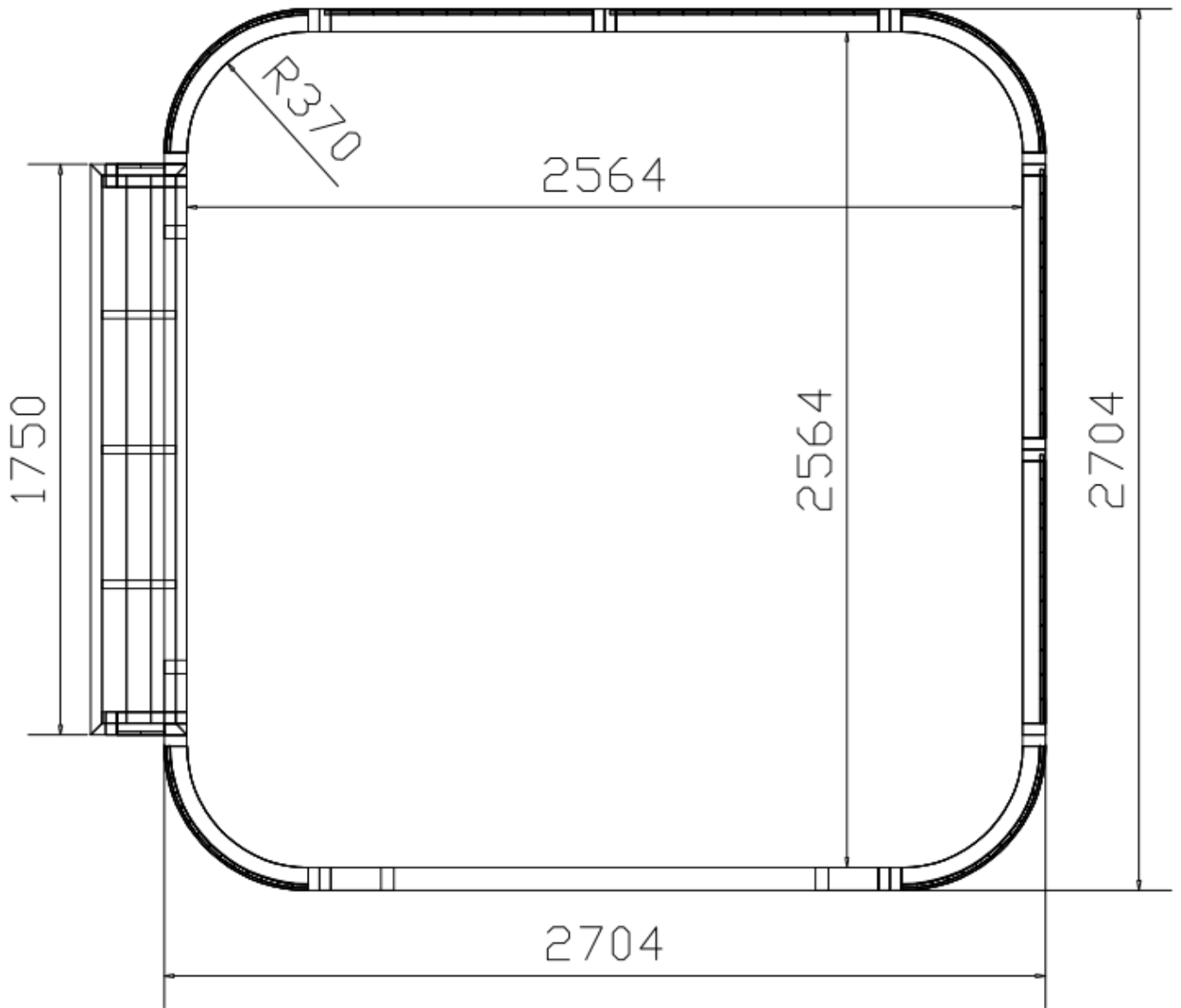
HE: מע רשקתל/ואדיווה/ עדימ/תורכמו תוריש רחאל

SAV.HABITATETJARDIN.COM

Outside dimensions / Dimensions extérieures



Inside dimensions / Dimensions intérieures





1. Join 2# (A) and 2pcs 1# together and fix them with 52pcs 16# M8*68MM screws .



2. Join 2# (B) together too.



3. Join the rest 2pcs 1# together too.



4. Join 2# (C) together too.



5. Stand up the 2# (D) to the ready install place



6. Install the 1st arch (5#) between the 2# (A) and 2# (D), install the 2nd arch (5#) between the 2# (C) and 2# (D), fix them with 4pcs 16# M8*68MM screws.



7. fix them with 2pcs 16# M8*68MM screws .



8. fix them with 2pcs 16# M8*68MM screws .



9. Join the 1st 11# together the 2# (A), and Join the 2nd 11# together the 2# (D).



10. fix them with 4pcs 16# M8*68MM screws .



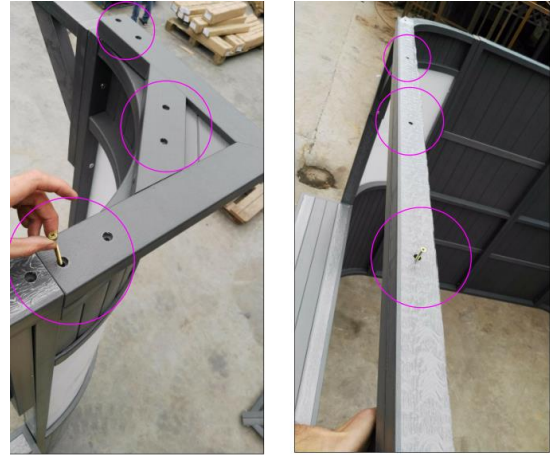
11. Put the 10# on the 11#.



12. fix them with 4pcs 17# M8*40MM screws



13. Install the 6# and make the room body more stronger, Install the 8# as the picture.



14. fix them with 36pcs 19# M4*60MM screws



15. Join each 2pcs 3# together as the picture (total 4pcs big top frames after finish) , fix them with 32pcs 14# M8*78MM screws .



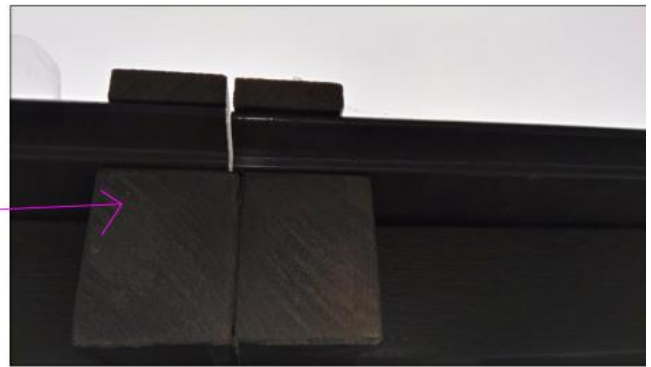
16. Join the big top frames together, fix with 32pcs 15# M8*73MM screws



17. Complete the splicing and fixing of the top frame.



18. Move the top frame on the room body, and fix it on the beam and tripod with 32pcs 18# M4*90MM screws .



19. Install the 4# as the picture, fix with 80pcs 20# M4*30MM screws .



20. Finished the installation of the tile.

21. Put the 9# on the top as the picture. Fix with 4pcs 19# M4*60MM screws .



22. Install the 7#, fix with nails of a nail gun.

23. Fix with 20# M4*30MM screws .



24. Finish the install of the product.





**1. Rejoignez 2 # (A) et 2pcs 1 # ensemble et corrigez-les avec des vis 52pcs 16 # M8 * 68mm
Vis**



2. Rejoindre 2 # (B) ensemble aussi



3. Rejoindre le reste 2pcs 1 # ensemble aussi.



4. Joindre 2 # (C) ensemble.



5. Tourner 2 # (D) à l'emplacement d'installation



6. Installez la première arc (5 #) entre les 2 # (a) et 2 # (d), installez la deuxième arc (5 #) entre les 2 # (c) et 2 # (D), corrigez-les avec 4PCS 16 # Vis M8 * 68mm.



7. Fixez-les avec des vis 2PCS 16 # M8 * 68mm.



8. Fixez-les avec des vis 2PCS 16 # M8 * 68mm.



9. Rejoignez le premier 11# avec le 2# (A) et rejoignez la seconde 11# avec le 2# (D).



10. Fixez-les avec des vis 4PCS 16 # M8 * 68mm.



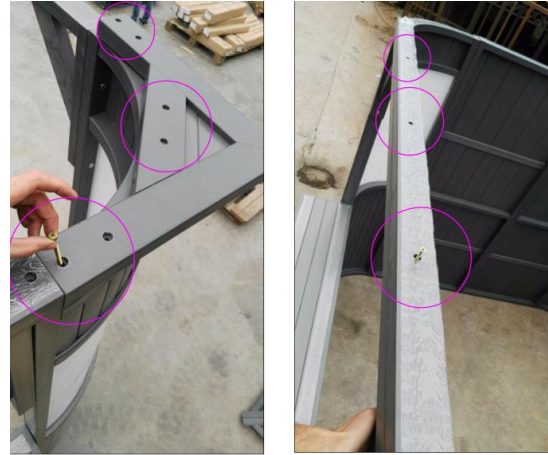
11. Mettez le 10 # sur le 11 #.



12. Fixez-les avec des vis 4PCS 17 # M8 * 40mm



13. Installez le 6 # et rendez le corps de la salle plus fort, installez le 8 # comme l'image.



14. Fixez-les avec des vis 36pcs 19 # M4 * 60mm



15. Rejoignez 2pcs 3 # ensemble comme photo (nombre total de 4 pcs de gros images après la finition), fixez-les avec des vis 32pcs 14 # M8 * 78mm.



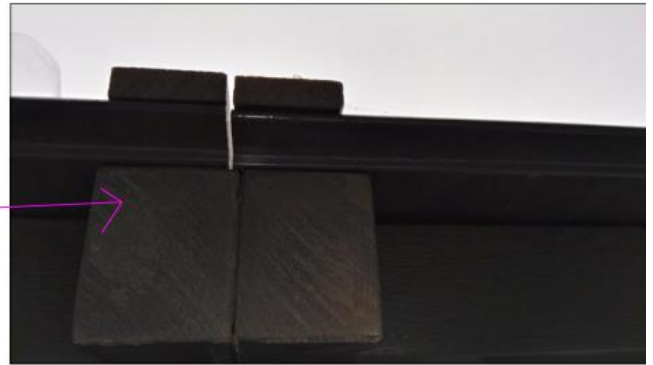
16. Rejoignez les gros cadres supérieurs ensemble, fixez avec des vis 32PCS 15 # M8 * 73mm



17. Complétez l'épissage et la fixation du cadre supérieur.



18. Déplacez le cadre supérieur sur le corps de la pièce et fixez-le sur la poutre et le trépied avec des vis de 18 pcs 18 # M4 * 90mm.



19. Installez le 4 # comme photo, fixez-le avec des vis 80pcs de vis 20# M4 * 30 mm.



20. Terminez l'installation de la tuile.

21. Placez le 9 # sur le dessus comme photo. fix avec 4pcs de vis 19 # M4 * 60mm.



22. Installez le 7 #, fixez des ongles avec un pistolet à ongles.

23. Correction avec des vis 20 # m4 * 30mm.



24. Terminez l'installation du produit.

